



**REGIONAL SPECIALISED METEOROLOGICAL CENTRE-TROPICAL CYCLONES, NEW DELHI
TROPICAL WEATHER OUTLOOK**

DEMS-RSMC SPECIAL TROPICAL CYCLONES NEW DELHI DATED 23.10.2023

FROM: RSMC –TROPICAL CYCLONES, NEW DELHI

**TO: STORM WARNING CENTRE, NAYPYI TAW (MYANMAR)
STORM WARNING CENTRE, BANGKOK (THAILAND)
STORM WARNING CENTRE, COLOMBO (SRILANKA)
STORM WARNING CENTRE, DHAKA (BANGLADESH)
STORM WARNING CENTRE, KARACHI (PAKISTAN)
METEOROLOGICAL OFFICE, MALE (MALDIVES)
OMAN METEOROLOGICAL DEPARTMENT, MUSCAT (THROUGH RTH JEDDAH)
YEMEN METEOROLOGICAL SERVICES, REPUBLIC OF YEMEN (THROUGH RTH JEDDAH)
NATIONAL CENTRE FOR METEOROLOGY, UAE (THROUGH RTH JEDDAH)
PRESIDENCY OF METEOROLOGY AND ENVIRONMENT, SAUDI ARABIA (THROUGH RTH JEDDAH)
IRAN METEOROLOGICAL ORGANISATION, (THROUGH RTH JEDDAH)
QATAR METEOROLOGICAL DEPARTMENT (THROUGH RTH JEDDAH)**

TROPICAL CYCLONE ADVISORY NO. 23 FOR NORTH INDIAN OCEAN (THE BAY OF BENGAL AND THE ARABIAN SEA) VALID FOR NEXT 120 HOURS ISSUED AT 2100 UTC OF 23.10.2023 BASED ON 1800 UTC OF 23.10.2023.

SUB: (A) VERY SEVERE CYCLONIC STORM “TEJ” (PRONOUNCED AS TEJ) OVER WESTCENTRAL ARABIAN SEA VERY CLOSE TO YEMEN COAST AND (B) CYCLONIC STORM “HAMOON” OVER NORTHWEST AND ADJOINING WESTCENTRAL BAY OF BENGAL

(A) VERY SEVERE CYCLONIC STORM “TEJ” (PRONOUNCED AS TEJ) OVER WESTCENTRAL ARABIAN SEA VERY CLOSE TO YEMEN COAST

THE VERY SEVERE CYCLONIC STORM “TEJ” (PRONOUNCED AS TEJ) OVER WESTCENTRAL ARABIAN SEA MOVED NORTH-NORTHWESTWARDS WITH A SPEED OF 9 KMPH DURING PAST 6 HOURS AND LAY CENTERED AT 1800 UTC OF 23RD OCTOBER OVER THE WESTCENTRAL ARABIAN SEA VERY CLOSE TO YEMEN COAST, NEAR LATITUDE 15.8°N AND LONGITUDE 52.3°E, ABOUT 30 KM SOUTH-SOUTHEAST OF AL GHAI DAH (YEMEN, 413198) AND 230 KM WEST-SOUTHWEST OF SALALAH (OMAN, 41316).

IT IS VERY LIKELY TO MOVE NORTHWESTWARDS AND CROSS YEMEN COAST CLOSE TO SOUTH OF AL- GHAI DAH WITHIN A FEW HOURS AS A VERY SEVERE CYCLONIC STORM WITH WIND SPEED OF 125-135 KMPH GUSTING TO 150 KMPH (70 KNOTS GUSTING TO 80 KNOTS). LANDFALL PROCESS CONTINUES AND WILL BE COMPLETED WITHIN A FEW HOURS.

FORECAST TRACK AND INTENSITY ARE GIVEN BELOW:

DATE/TIME (UTC)	POSITION (LAT.⁰N/ LONG.⁰E)	MAXIMUM SUSTAINED SURFACE WIND SPEED (KMPH)	CATEGORY OF CYCLONIC DISTURBANCE
23.10.23/1800	15.8/52.3	125-135 GUSTING TO 150	VERY SEVERE CYCLONIC STORM
24.10.23/0000	16.1/51.9	90-100 GUSTING TO 110	SEVERE CYCLONIC STORM
24.10.23/0600	16.4/51.5	45-55 GUSTING TO 65	DEPRESSION
24.10.23/1200	16.7/51.1	25-35 GUSTING TO 45	WELL MARKED LOW PRESSURE AREA

AS PER INSAT 3D IMAGERY, INTENSITY OF THE SYSTEM IS CHARACTERISED AS T 4.0/4.0. ASSOCIATED BROKEN LOW AND MEDIUM CLOUDS WITH EMBEDDED INTENSE TO VERY INTENSE CONVECTION LAY OVER WESTCENTRAL ARABIAN SEA BETWEEN LATITUDE 13.0°N TO 17.0°N AND LONGITUDE 51.0°E TO 55.5°E & EAST YEMEN & OMAN. MINIMUM CLOUD TOP TEMPRATURE HAS INCREASED AND IS MINUS 77°C. THE SATELLITE IMAGERY SHOWS GRADUAL WEAKENING OF SYSTEM. MULTISATELLITE WINDS INDICATE STRONGER WINDS IN THE NORTHEASTERN SECTOR. TOTAL PRECIPITABLE WATER IMAGERY SHOWS THAT DRY AIR INCURSION IS TAKING PLACE REACHING UPTO THE CORE FROM SOUTHWEST SECTOR.

ASSOCIATED MAXIMUM SUSTAINED WIND SPEED IS 70 KNOTS GUSTING TO 80 KNOTS. THE ESTIMATED CENTRAL PRESSURE IS 986 HPA.

LATEST OBSERVATIONS INDICATE THAT GALE WIND SPEED REACHING 70 KNOTS GUSTING TO 80 KNOTS ARE PREVAILING ALONG & OFF SOUTH OMAN AND EASTERN YEMEN COASTS. THE SAME WIND SPEED WOULD CONTINUE TILL THE COMPLETION OF LANDFALL PROCESS.

STORM SURGE GUIDANCE FOR YEMEN COAST:

STORM SURGE OF ABOUT 2 METER HEIGHT ABOVE THE ASTRONOMICAL TIDE IS LIKELY TO INUNDATE LOW LYING AREAS BETWEEN AL GHAYDAH AND AL FAYDAMI NEAR THE LANDFALL POINT.

SEA CONDITION:

• **WESTCENTRAL ARABIAN SEA:**

PHENOMENAL SEA CONDITION IS PREVAILING AND WILL CONTINUE TILL 2100 UTC OF 23RD OCTOBER. IT WOULD IMPROVE GRADUALLY THEREAFTER BECOMING **HIGH TO VERY ROUGH** BY 0000 UTC OF 24TH AND ROUGH TO VERY ROUGH BY 1200 UTC OF 24TH OCTOBER. THEREAFTER, IT WOULD IMPROVE GRADUALLY.

(B) CYCLONIC STORM “HAMOON” OVER NORTHWEST AND ADJOINING WESTCENTRAL BAY OF BENGAL

THE CYCLONIC STORM “HAMOON” OVER NORTHWEST AND WESTCENTRAL BAY OF BENGAL MOVED NORTHEASTWARDS WITH A SPEED OF 18 KMPH DURING PAST 6 HOURS, AND LAY CENTERED AT 1800 UTC OF 23RD OCTOBER OVER THE SAME REGION, NEAR LATITUDE 19.0°N AND LONGITUDE 88.0°E, ABOUT 200 KM

SOUTHEAST OF PARADIP (ODISHA, 42976), 290 KM SOUTH-SOUTHEAST OF DIGHA (WEST BENGAL, 42901) AND 400 KM SOUTH-SOUTHWEST OF KHEPUPARA (BANGLADESH, 41984).

IT IS LIKELY TO INTENSIFY FURTHER INTO A SEVERE CYCLONIC STORM OVER NORTHWEST BAY OF BENGAL DURING NEXT 6 HOURS. IT IS VERY LIKELY TO MOVE NEARLY NORTH-NORTHEASTWARDS AND CROSS BANGLADESH COAST BETWEEN KHEPUPARA AND CHITTAGONG DURING 0600-0900 UTC OF 25TH OCTOBER AS A DEEP DEPRESSION.

FORECAST TRACK AND INTENSITY ARE GIVEN BELOW:

DATE/TIME(UTC)	POSITION LAT. °N/ LONG. °E	MAXIMUM SUSTAINED SURFACE WIND SPEED (KMPH)	CATEGORY OF CYCLONIC DISTURBANCE
23.10.23/1800	19.0/88.0	80-90 GUSTING TO 100	CYCLONIC STORM
24.10.23/0000	19.5/88.5	90-100 GUSTING TO 110	SEVERE CYCLONIC STORM
24.10.23/0600	20.0/89.0	80-90 GUSTING TO 100	CYCLONIC STORM
24.10.23/1200	20.6/89.5	70-80 GUSTING TO 90	CYCLONIC STORM
24.10.23/1800	21.2/90.0	60-70 GUSTING TO 80	CYCLONIC STORM
25.10.23/0600	21.9/90.5	50-60 GUSTING TO 70	DEEP DEPRESSION
25.10.23/1800	22.6/91.0	25-35 GUSTING TO 45	WELL MARKED LOW PRESSURE AREA

AS PER INSAT 3D IMAGERY, INTENSITY OF THE SYSTEM IS CHARACTERISED AS T3.0. IRREGULAR CENTRE DENSE OVERCAST PATTERN IS SEEN WITH DIAMETER OF 1.5 DEGREE. CONVECTIVE CLOUD MASS ASSOCIATED WITH THE SYSTEM IS SEEN OVER THE NORTHWEST BAY OF BENGAL. OUTFLOW CLOUD BANDS ARE OBSERVED OVER ODISHA, JHARKHAND, EAST BIHAR, WEST BENGAL, NORTHEAST STATES OF INDIA & SOUTH BANGLADESH.

ASSOCIATED SCATTERED TO BROKEN LOW AND MEDIUM CLOUDS WITH EMBEDDED INTENSE TO VERY INTENSE CONVECTION LAY OVER NORTH AND ADJOINING CENTRAL BAY OF BENGAL BETWEEN LATITUDE 16.5N TO 21.0N AND LONGITUDE 85.0E TO 90.0E. MINIMUM CLOUD TOP TEMPRATURE IS MINUS 93 DEGREE CELSIUS. OUTFLOW CLOUD BANDS ARE OBSERVED OVER ODISHA, JHARKHAND EAST BIHAR, WEST BENGAL, NORTHEAST STATES OF INDIA. CONVECTIVE CLOUDS ARE ALSO OBSERVED OVER WEST CENTRAL & ADJOINING NORTH BAY OF BENGAL. MULTISATELLITE WINDS INDICATE STRONGER WINDS IN EASTERN SECTOR. TOTAL PRECIPITABLE WATER IMAGERY INDICATES WARM MOIST AIR INCURSION INTO THE SYSTEM CORE.

ASSOCIATED MAXIMUM SUSTAINED WIND SPEED IS 40 KNOTS GUSTING TO 50 KNOTS. THE ESTIMATED CENTRAL PRESSURE IS 996 HPA.

WIND GUIDANCE (WARNING MAP ENCLOSED):

• **NORTH BAY OF BENGAL:**

GALE WIND SPEED 80-90 KMPH GUSTING TO 100 KMPH IS PREVAILING AND LIKELY TO BECOME 90-100 KMPH GUSTING 110 KMPH FROM 0000 TO 0600 UTC OF 24TH. IT WOULD DECREASE GRADUALLY THEREAFTER BECOMING GALE WIND SPEED REACHING 70-80 KMPH GUSTING TO 90 KMPH BY 1200 UTC OF 24TH

, **60-70 KMPH GUSTING TO 80 KMPH** BY 0000 UTC OF 25TH AND **SQUALLY WIND** SPEED REACHING **50-60 KMPH GUSTING TO 70 KMPH** AROUND 1200 UTC OF 25TH AND WOULD DECREASE THEREAFTER.

- **ADJOINING WESTCENTRAL BAY OF BENGAL: SQUALLY WIND** SPEED REACHING **75-85 KMPH GUSTING TO 95 KMPH** IS PREVAILING AND LIKELY TO CONTINUE TILL 24TH OCTOBER. IT IS LIKELY TO DECREASE GRADUALLY THEREAFTER BECOMING **SQUALLY WIND** SPEED REACHING **50-60 KMPH GUSTING 70 KMPH** BY 1200 UTC OF 24TH AND **40-50 KMPH GUSTING 60 KMPH** TILL 0000 UTC OF 25TH.
- **ADJOINING EASTCENTRAL BAY OF BENGAL: SQUALLY WIND** SPEED REACHING **45-55 KMPH GUSTING TO 65 KMPH** IS LIKELY TO INCREASE GRADUALLY BECOMING **50-60 KMPH GUSTING TO 70 KMPH** ON 24TH AND DECREASE FROM 25TH ONWARDS.
- **ALONG & OFF ODISHA, WEST BENGAL, BANGLADESH AND NORTH MYANMAR COASTS:**
SQUALLY WIND SPEED REACHING **40-50 KMPH GUSTING TO 60 KMPH** IS LIKELY FROM 1200 UTC OF 23RD TO 24TH ALONG & OFF ODISHA COAST. **SQUALLY WIND** SPEED REACHING **40-50 KMPH GUSTING TO 60 KMPH** IS LIKELY TO COMMENCE ALONG & OFF WEST BENGAL, BANGLADESH AND NORTH MYANMAR COASTS FROM 0000 UTC OF 24TH. IT WOULD GRADUALLY INCREASE BECOMING **55-65 KMPH GUSTING TO 75 KMPH** ALONG & OFF BANGLADESH COAST, **50-60 KMPH GUSTING TO 70 KMPH** ALONG & OFF NORTH MYANMAR COAST AND **45-55 KMPH GUSTING TO 65** ALONG & OFF WEST BENGAL COAST ON 25TH OCTOBER.
- **MIZORAM, TRIPURA, SOUTH ASSAM AND MANIPUR:**
SQUALLY WIND SPEED REACHING **40-50 KMPH GUSTING TO 60 KMPH** IS LIKELY TO PREVAIL OVER MIZORAM AND TRIPURA AND STRONG WIND SPEED REACHING **30-40 KMPH GUSTING TO 50 KMPH** OVER SOUTH ASSAM & MANIPUR ON 25TH OCTOBER.

STORM SURGE GUIDANCE FOR BANGLADESH COAST:

STORM SURGE OF ABOUT 1.0-1.5 METRE HEIGHT ABOVE THE ASTRONOMICAL TIDE IS LIKELY TO INUNDATE LOW LYING AREAS BETWEEN KHEPUPARA AND CHITTAGONG AROUND THE TIME OF LANDFALL.

SEA CONDITION:

- **NORTH BAY OF BENGAL:**
VERY ROUGH TO HIGH SEA CONDITION IS PREVAILING AND LIKELY TO CONTINUE TILL 24TH AND VERY ROUGH ON 25TH OCTOBER.
- **ADJOINING WESTCENTRAL BAY OF BENGAL: VERY ROUGH TO HIGH SEA CONDITION** IS PREVAILING AND LIKELY TO CONTINUE TILL 24TH AND **ROUGH TO VERY ROUGH** ON 25TH OCTOBER. IT IS LIKELY TO IMPROVE GRADUALLY THEREAFTER.
- **ADJOINING EASTCENTRAL BAY OF BENGAL: MODERATE TO ROUGH SEA CONDITION** IS PREVAILING AND LIKELY TO CONTINUE TILL 24TH OCTOBER AND **ROUGH TO VERY ROUGH** ON 25TH OCTOBER. IT IS LIKELY TO IMPROVE GRADUALLY THEREAFTER.
- **ALONG & OFF ODISHA, WEST BENGAL, BANGLADESH AND NORTH MYANMAR COASTS: ROUGH SEA CONDITION** IS LIKELY ON 23RD AND **ROUGH TO VERY ROUGH** ON 24TH AND 25TH OCTOBER.

REMARKS:

ARABIAN SEA:

MADDEN JULIAN OSCILLATION INDEX IS IN PHASE 8 WITH AMPLITUDE LESS THAN 1. IT WOULD CONTINUE IN SAME PHASE DURING NEXT 3 DAYS. SEA SURFACE TEMPERATURE IS 28-29°C OVER WESTCENTRAL ARABIAN SEA. THE TROPICAL CYCLONE HEAT POTENTIAL IS AROUND 20-30 KJ/CM² OVER WESTCENTRAL ARABIAN SEA NEAR THE SYSTEM LOCATION AND ALSO ALONG & OFF OMAN-YEMEN COASTS. THE LOW LEVEL POSITIVE VORTICITY IS AROUND 150 X10⁻⁶S⁻¹ TO THE SOUTH OF THE SYSTEM CENTER WITH VERTICAL EXTENSION UPTO 200 HPA LEVEL. THE POSITIVE LOW LEVEL CONVERGENCE IS ABOUT 30X10⁻⁵S⁻¹ TO THE SOUTH OF SYSTEM CENTER. POSITIVE UPPER LEVEL DIVERGENCE IS ABOUT 30 X10⁻⁵ S⁻¹ AROUND THE SYSTEM CENTRE. WIND SHEAR IS MODERATE TO HIGH (20-25 KNOTS) OVER SYSTEM AREA AND ALONG THE EXPECTED TRACK.

EXISTING FEATURES INDICATE THAT THE SYSTEM IS OVER COLDER SEA, AN AREA OF LOWER OCEAN THERMAL ENERGY AND IS EXPERIENCING DRY COLD AIR INCURSION INTO THE CORE FROM ARABIAN PENINSULAR REGION. MOREOVER, AS THE LANDFALL PROCESS STARTED THE SYSTEM IS LOOSING ENERGY DUE TO FRICTION. UNDER SUCH ENVIRONMENTAL CONDITIONS, THE SYSTEM IS LIKELY TO WEAKEN GRADUALLY.

IN VIEW OF ABOVE, THE VERY SEVERE CYCLONIC STORM "TEJ" (PRONOUNCED AS TEJ) OVER WESTCENTRAL ARABIAN SEA IS VERY LIKELY TO CONTINUE TO MOVE NORTHWESTWARDS AND CROSS YEMEN COAST CLOSE TO SOUTH OF AL-GHAIDAH DURING 1800-2100 UTC OF 23RD OCTOBER AS A **VERY SEVERE CYCLONIC STORM** WITH WIND SPEED OF 125-135 KMPH GUSTING TO 150 KMPH.

BAY OF BENGAL:

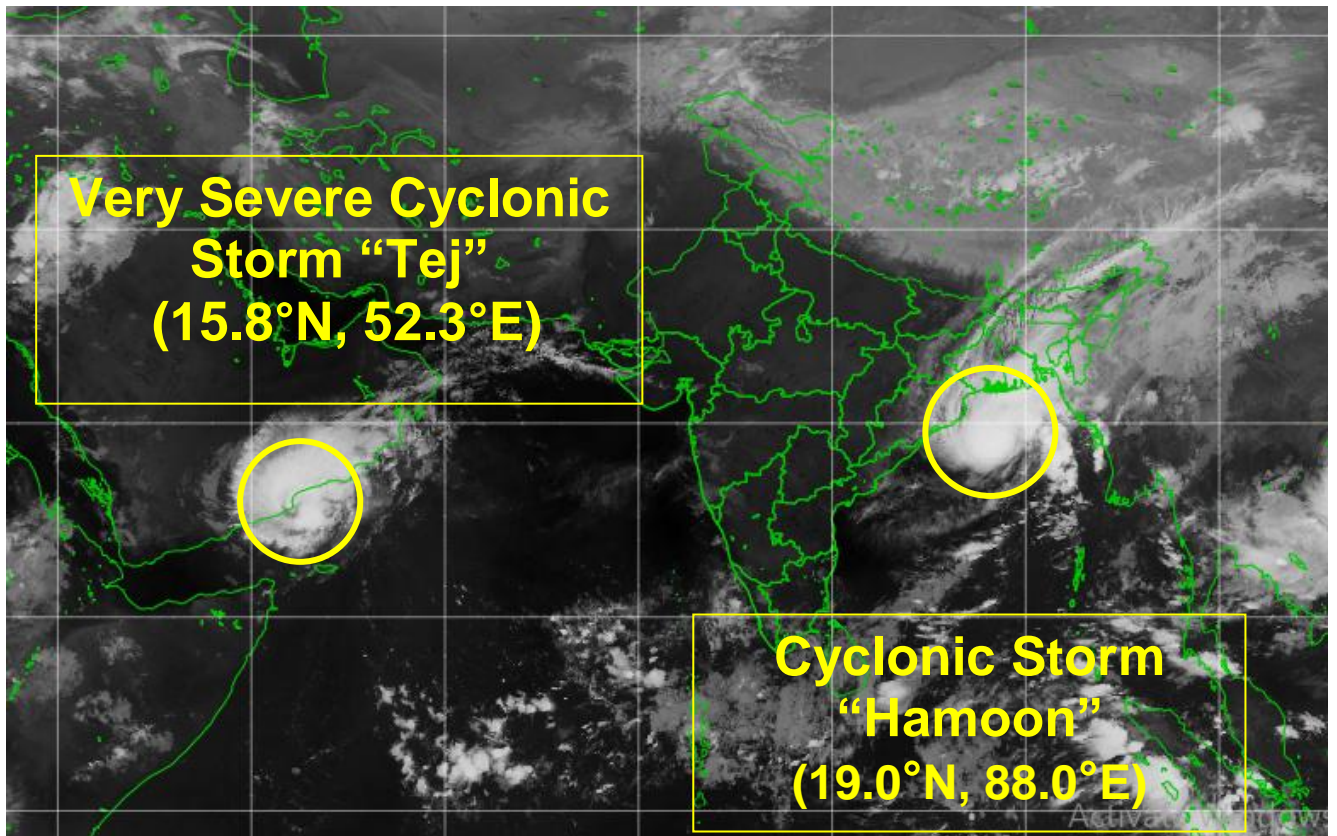
MODELS ARE IN AGREEMENT THAT THE CYCLONIC STORM "HAMOON" WOULD CROSS BANGLADESH COAST. SOME OF THE MODELS ARE ALSO ALSO INDICATING FURTHER INTENSIFICATION INTO SEVERE CYCLONIC STORM DURING NEXT 12 HOURS. THERE IS ALSO CONSENSUS AMONG VARIOUS MODELS WRT WEAKENING BEFORE LANDFALL.

SEA SURFACE TEMPERATURE IS 28-30°C OVER NORTH BAY OF BENGAL. THE LOW LEVEL POSITIVE VORTICITY IS AROUND 200 X10⁻⁶S⁻¹ SOUTH OF THE SYSTEM CENTER. THE POSITIVE LOW LEVEL CONVERGENCE LIES TO THE NORTHEAST OF THE SYSTEM CENTRE AND IS ABOUT 20X10⁻⁵S⁻¹. POSITIVE UPPER LEVEL DIVERGENCE IS ABOUT 20-30 X10⁻⁵ S⁻¹ ALONG THE FORECAST TRACK OF SYSTEM. THE SYSTEM IS ENTERING INTO A ZONE OF MODERATE (20 KNOTS) WIND SHEAR WHICH IS HIGH ALONG THE FORECAST TRACK. THE SYSTEM IS UNDER UNFAVOURABLE CONDITIONS.

CONSIDERING ALL THESE, THE CYCLONIC STORM "HAMOON" OVER

NORTHWEST & ADJOINING WESTCENTRAL BAY OF BENGAL IS VERY LIKELY TO INTENSIFY FURTHER DURING NEXT 06 HOURS REACHING PEAK INTENSITY OF 50 KNOTS GUSTING TO 60 KNOTS WILL OCCUR AROUND 0000 UTC OF 24TH. THEREAFTER, IT IS EXPECTED TO WEAKEN GRADUALLY WHILE MOVING TOWARDS BANGLADESH COAST. IT IS LIKELY TO WEAKEN UNDER THE INFLUENCE OF HIGH VERTICAL WIND SHEAR IN ASSOCIATION WITH THE UPPER AIR TROUGH IN WESTERLY WITH EMBEDDED JET STREAM OVER THE REGION. IT IS VERY LIKELY TO MOVE NEARLY NORTH-NORTHEASTWARDS AND CROSS BANGLADESH COAST BETWEEN KHEPUPARA AND CHITTAGONG AROUND 0600-0900 UTC OF 25TH OCTOBER AS A **DEEP DEPRESSION** WITH WIND SPEED OF 55-65 GUSTING TO 75 KMPH (30 GUSTING TO 40 KNOTS).

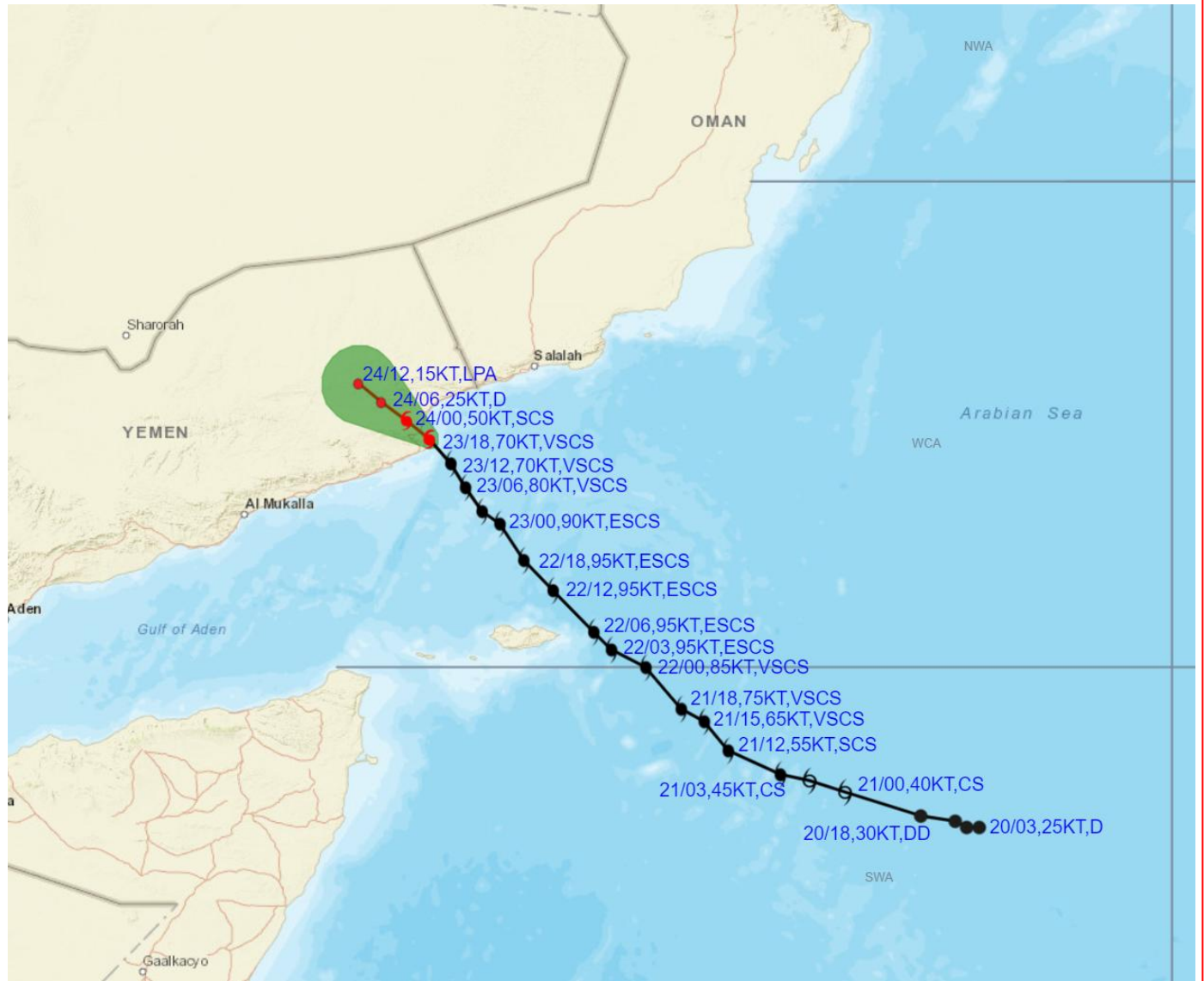
(SHASHI KANT)
SCIENTIST-D
RSMC, NEW DELHI



Cloud distribution: (a) Isolated: <25%, Scattered:25-50%, Broken: 51-75%, Solid:>75%, Convection Intensity: (a) Weak: Cloud Top Temperature (CTT) >-25°C, (b) Moderate: CTT: - 25°C to -40°C, (c) Intense: CTT: - 41°C to -70°C and (d) Very Intense: : Less than -70°C
 PROBABILITY OF CYCLOGENESIS (FORMATION OF DEPRESSION):NIL: 0%, LOW: 1-33%, , MODERATE: 34-66% AND HIGH: 67-100%
 This is a guidance Bulletin for WMO/ESCAP Panel Member countries. Visit respective National websites for Country specific Bulletins



OBSERVED AND FORECAST TRACK ALONGWITH CONE OF UNCERTAINTY OF VERY SEVERE CYCLONIC STORM "TEJ" OVER WESTCENTRAL ARABIAN SEA BASED ON 1800 UTC (2330 IST) OF 23RD OCTOBER 2023.



DATE/TIME IN UTC

IST=UTC + 0530

L: LOW PRESSURE AREA

WML: WELL MARKED LOW PRESSURE AREA

D: DEPRESSION (17-27 KT)

DD: DEEP DEPRESSION (28-33 KT)

CS: CYCLONIC STORM (34-47 KT)

SCS: SEVERE CYCLONIC STORM (48-63KT)

VSCS: VERY SEVERE CYCLONIC STORM (64-89 KT)

ESCS: EXTREMELY SEVERE CYCLONIC STORM (90-119 KT)

SuCS: SUPER CYCLONIC STORM (≥ 120 KT)

● LESS THAN 34 KT

⊖ 34-47 KT

⊖ ≥ 48 KT

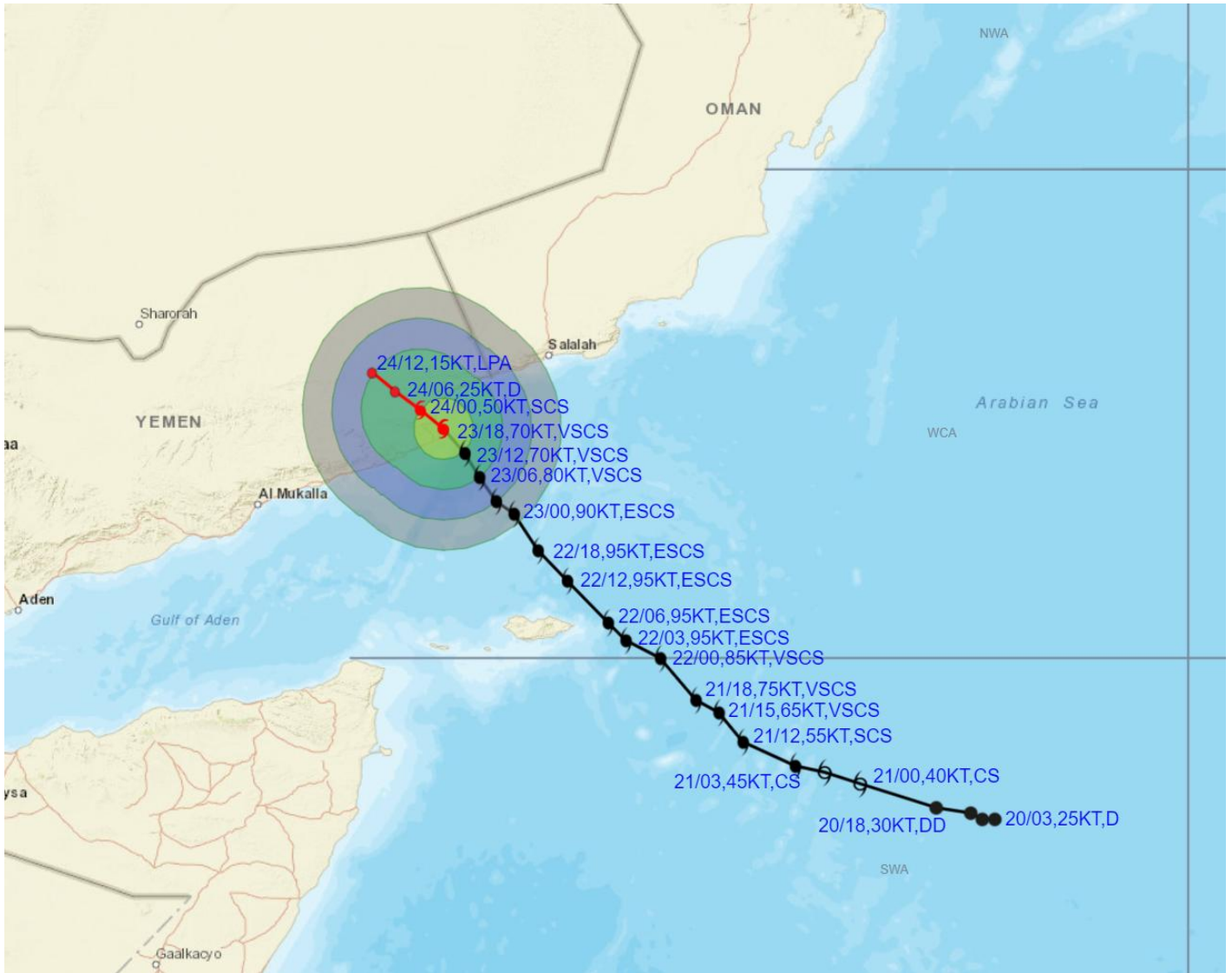
█ OBSERVED TRACK

█ FORECAST TRACK

▲ CONE OF UNCERTAINTY



OBSERVED AND FORECAST TRACK ALONGWITH QUADRANT WIND DISTRIBUTION OF VERY SEVERE CYCLONIC STORM "TEJ" OVER WESTCENTRAL ARABIAN SEA BASED ON 1800 UTC (2330 IST) OF 23RD OCTOBER 2023.



DATE/TIME IN UTC

IST=UTC +0530

L: LOW PRESSURE AREA

WML: WELL MARKED LOW PRESSURE AREA

D: DEPRESSION (17-27 KT)

DD: DEEP DEPRESSION (28-33 KT)

CS: CYCLONIC STORM (34-47 KT)

SCS: SEVERE CYCLONIC STORM (48-63KT)

VSCS: VERY SEVERE CYCLONIC STORM (64-89 KT)

ESCS: EXTREMELY SEVERE CYCLONIC STORM (90-119 KT)

SuCS: SUPER CYCLONIC STORM (≥ 120 KT)

- LESS THAN 34 KT
- ⊖ 34-47 KT
- ⊕ ≥ 48 KT
- OBSERVED TRACK
- FORECAST TRACK
- ▲ CONE OF UNCERTAINTY
- AREA OF MAXIMUM SUSTAINED WIND SPEED:
- 28-33 KT (52-61 KMPH)
- 34-49 KT (62-91 KMPH)
- 50-63 KT (92-117 KMPH)
- ≥ 64 KT (≥118 KMPH)

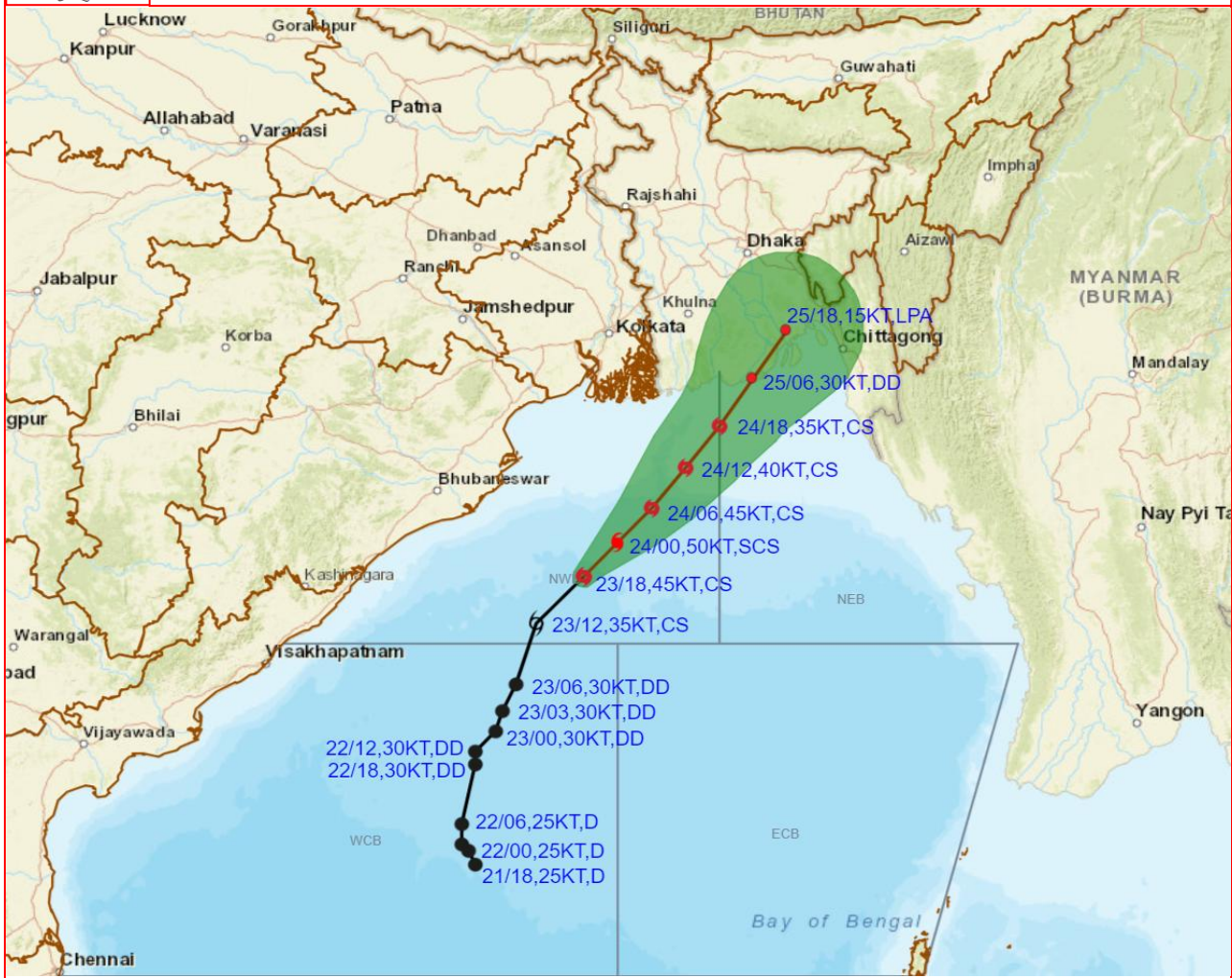
IMPACT OVER THE SEA

MSW (knot/kmph)	Impact	Action
28-33 (52-61)	Very rough seas	Total suspension of fishing operations
34-49 (62-91)	High to very high seas	Total suspension of fishing operations
50-63 (92-117)	Very high seas	Total suspension of fishing operations
≥ 64 (≥118)	Phenomenal	Total suspension of fishing operations

Cloud distribution: (a) Isolated: <25%, Scattered:25-50%, Broken: 51-75%, Solid:>75%, Convection Intensity: (a) Weak: Cloud Top Temperature (CTT) >-25°C, (b) Moderate: CTT: - 25°C to -40°C, (c) Intense: CTT: - 41°C to -70°C and (d) Very Intense: : Less than -70°C
PROBABILITY OF CYCLOGENESIS (FORMATION OF DEPRESSION):NIL: 0%, LOW: 1-33%, , MODERATE: 34-66% AND HIGH: 67-100%
 This is a guidance Bulletin for WMO/ESCAP Panel Member countries. Visit respective National websites for Country specific Bulletins



OBSERVED AND FORECAST TRACK ALONGWITH CONE OF UNCERTAINTY OF CYCLONIC STORM "HAMOON" OVER NORTHWEST AND ADJOINING WESTCENTRAL BAY OF BENGAL BASED ON 1800 UTC (2330 IST) OF 23RD OCTOBER 2023.



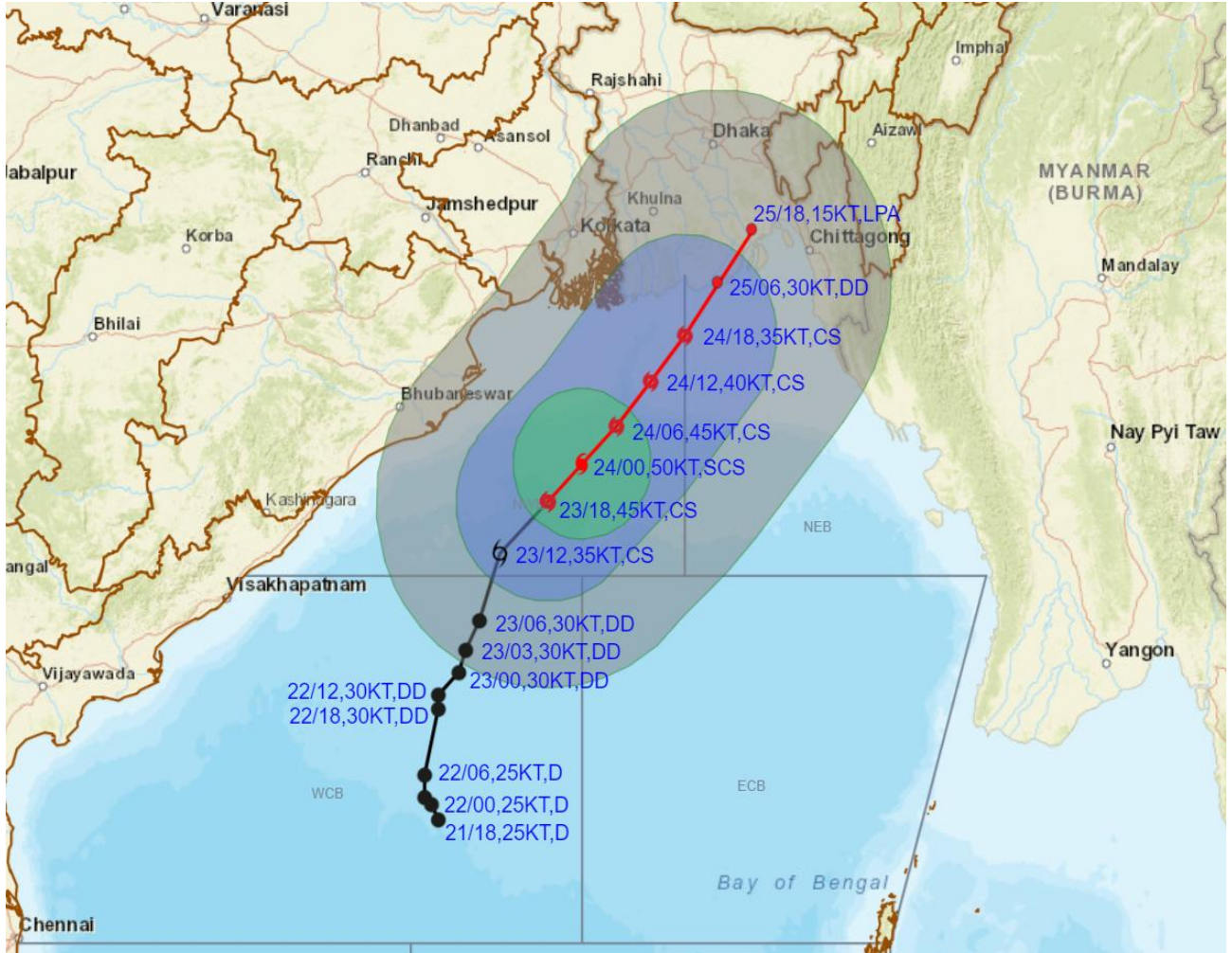
DATE/TIME IN UTC
 IST=UTC + 0530
 L: LOW PRESSURE AREA
 WML: WELL MARKED LOW PRESSURE AREA
 D: DEPRESSION (17-27 KT)
 DD: DEEP DEPRESSION (28-33 KT)
 CS: CYCLONIC STORM (34-47 KT)
 SCS: SEVERE CYCLONIC STORM (48-63KT)
 VSCS: VERY SEVERE CYCLONIC STORM (64-89 KT)
 ESCS: EXTREMELY SEVERE CYCLONIC STORM (90-119 KT)
 SuCS: SUPER CYCLONIC STORM (\geq 120 KT)

- LESS THAN 34 KT
- 34-47 KT
- \geq 48 KT
- OBSERVED TRACK
- FORECAST TRACK
- CONE OF UNCERTAINTY

Forecast	DISTANCE(KM) AND DIRECTION FROM STATIONS		
	PARADIP (CWR)	DIGHA	KHEPUPARA
24.10.23/1800	360, ENE	270, E	90, SSW
25.10.23/0600	440, ENE	320, E	30, ESE
25.10.23/1800	520, ENE	380, ENE	100, NE



OBSERVED AND FORECAST TRACK ALONGWITH QUADRANT WIND DISTRIBUTION OF CYCLONIC STORM “HAMOON” OVER NORTHWEST AND ADJOINING WESTCENTRAL BAY OF BENGAL BASED ON 1800 UTC (2330 IST) OF 23RD OCTOBER 2023.



DATE/TIME IN UTC
 IST=UTC + 0530
 L: LOW PRESSURE AREA
 WML: WELL MARKED LOW PRESSURE AREA
 D: DEPRESSION (17-27 KT)
 DD: DEEP DEPRESSION (28-33 KT)
 CS: CYCLONIC STORM (34-47 KT)
 SCS: SEVERE CYCLONIC STORM (48-63KT)
 VSCS: VERY SEVERE CYCLONIC STORM (64-89 KT)
 ESCS: EXTREMELY SEVERE CYCLONIC STORM (90-119 KT)
 SuCS: SUPER CYCLONIC STORM (≥20 KT)

● LESS THAN 34 KT
 ○ 34-47 KT
 ⊙ ≥ 48 KT
 — OBSERVED TRACK
 — FORECAST TRACK
 ○ CONE OF UNCERTAINTY
 AREA OF MAXIMUM SUSTAINED WIND SPEED:
 ■ 28-33 KT (52-61 KMPH)
 ■ 34-49 KT (62-91 KMPH)
 ■ 50-63 KT (92-117 KMPH)
 ■ ≥ 64 KT (≥118 KMPH)

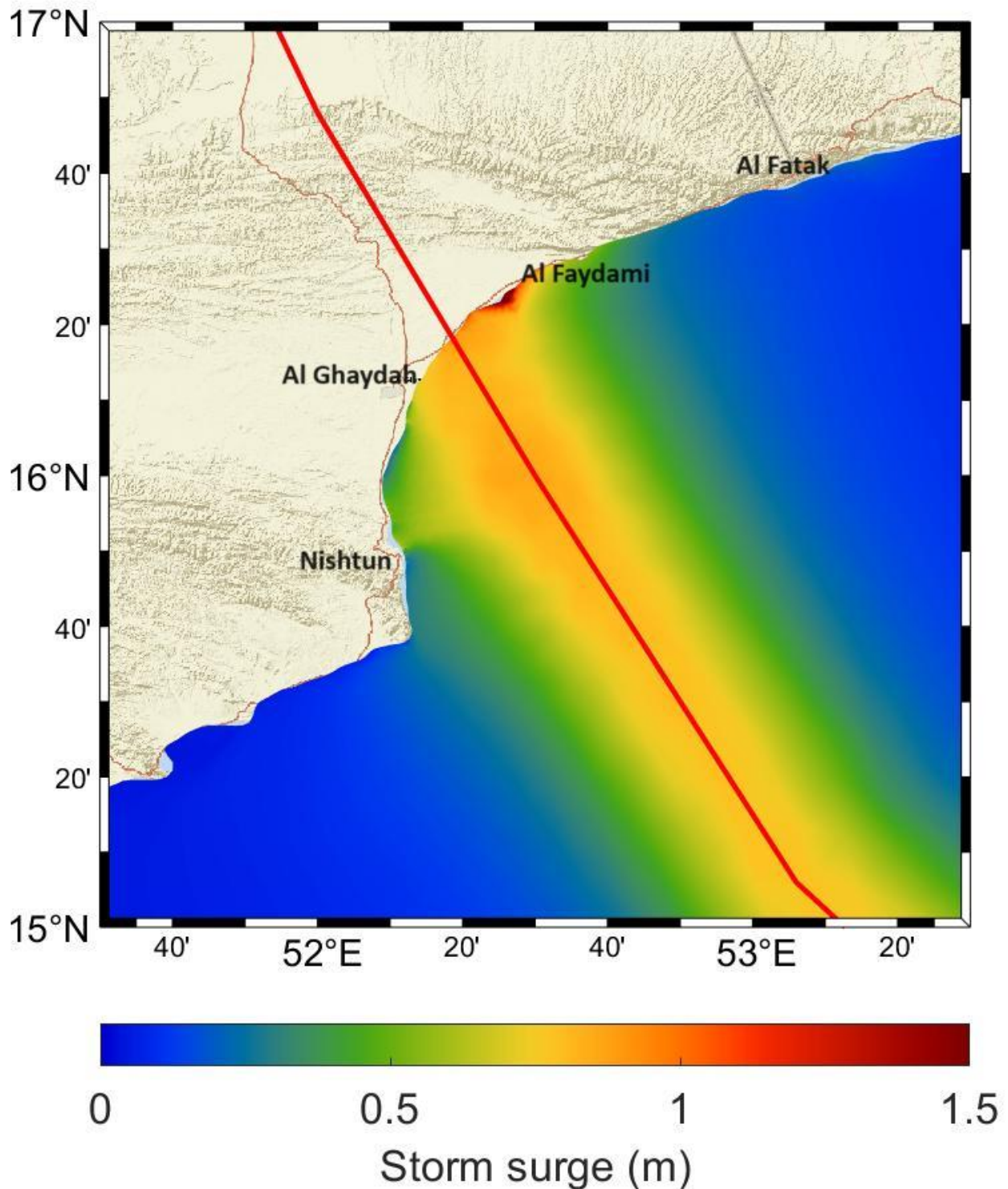
IMPACT OVER THE SEA

MSW (knot/kmph)	Impact	Action
28-33 (52-61)	Very rough seas	Total suspension of fishing operations
34-49 (62-91)	High to very high seas	Total suspension of fishing operations
50-63 (92-117)	Very high seas	Total suspension of fishing operations
≥ 64 (≥118)	Phenomenal	Total suspension of fishing operations

Cloud distribution: (a) Isolated: <25%, Scattered:25-50%, Broken: 51-75%, Solid:>75%, Convection Intensity: (a) Weak: Cloud Top Temperature (CTT) >-25°C, (b) Moderate: CTT: - 25°C to -40°C, (c) Intense: CTT: - 41°C to -70°C and (d) Very Intense: : Less than -70°C
 PROBABILITY OF CYCLOGENESIS (FORMATION OF DEPRESSION):NIL: 0%, LOW: 1-33%, , MODERATE: 34-66% AND HIGH: 67-100%
 This is a guidance Bulletin for WMO/ESCAP Panel Member countries. Visit respective National websites for Country specific Bulletins

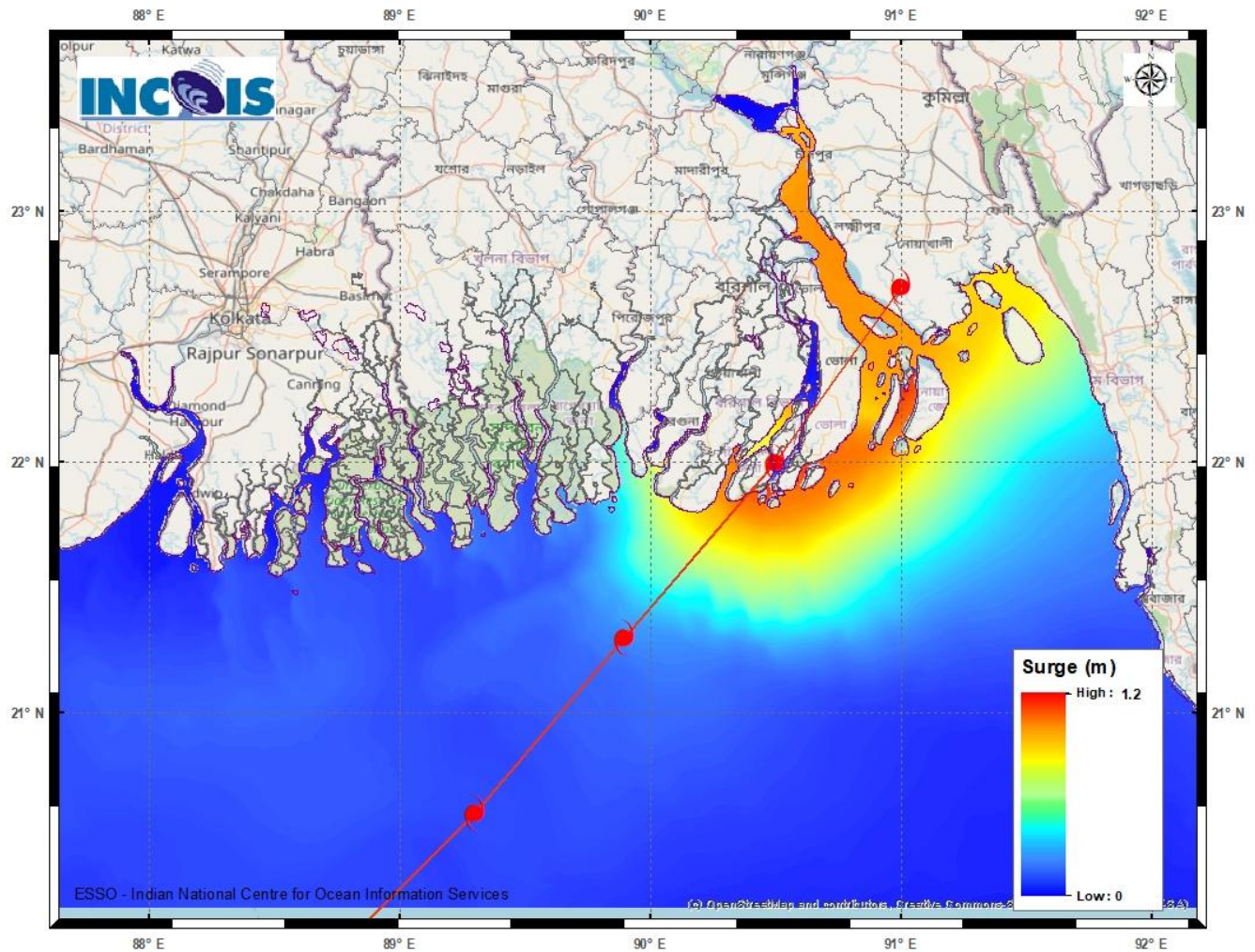
STORM SURGE GUIDANCE FOR YEMEN:

STORM SURGE OF ABOUT 2 METER HEIGHT ABOVE THE ASTRONOMICAL TIDE IS LIKELY TO INUNDATE LOW LYING AREAS BETWEEN AL GHAYDAH AND AL FAYDAMI NEAR THE LANDFALL POINT AT THE TIME OF LANDFALL.



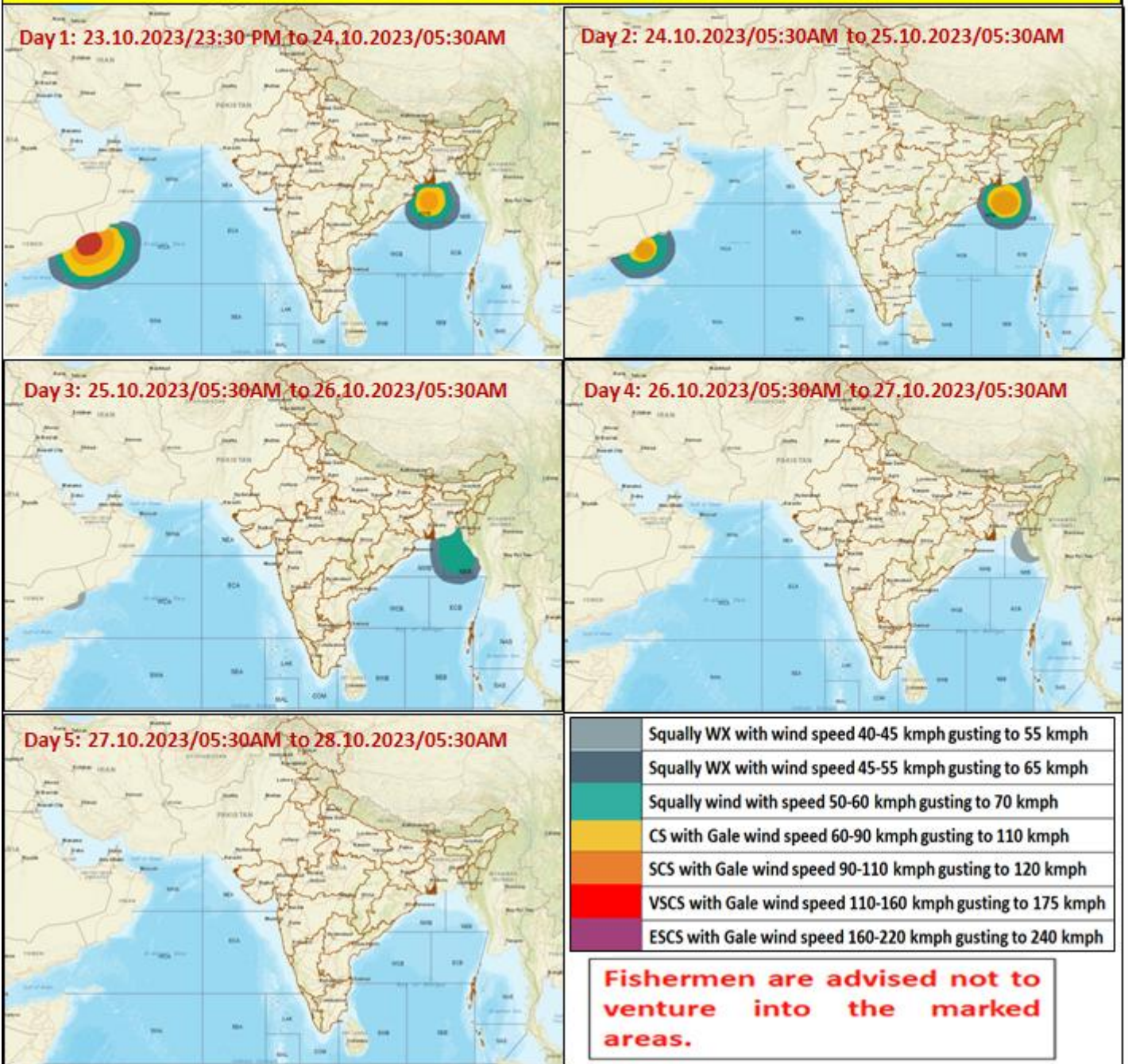
STORM SURGE GUIDANCE FOR BANGLADESH:

STORM SURGE OF ABOUT 1.0-1.5 METRE HEIGHT ABOVE THE ASTRONOMICAL TIDE IS LIKELY TO INUNDATE LOW LYING AREAS BETWEEN KHEPUPARA AND CHITTAGONG AROUND THE TIME OF LANDFALL.



Cloud distribution: (a) Isolated: <25%, Scattered:25-50%, Broken: 51-75%, Solid:>75%, Convection Intensity: (a) Weak: Cloud Top Temperature (CTT) >25°C, (b) Moderate: CTT: - 25°C to -40°C, (c) Intense: CTT: - 41°C to -70°C and (d) Very Intense: : Less than -70°C
 PROBABILITY OF CYCLOGENESIS (FORMATION OF DEPRESSION):NIL: 0%, LOW: 1-33%, , MODERATE: 34-66% AND HIGH: 67-100%
 This is a guidance Bulletin for WMO/ESCAP Panel Member countries. Visit respective National websites for Country specific Bulletins

Fishermen warning graphics



Cloud distribution: (a) Isolated: <25%, Scattered:25-50%, Broken: 51-75%, Solid:>75%, Convection Intensity: (a) Weak: Cloud Top Temperature (CTT) >-25°C, (b) Moderate: CTT: - 25°C to -40°C, (c) Intense: CTT: - 41°C to -70°C and (d) Very Intense: : Less than -70°C
 PROBABILITY OF CYCLOGENESIS (FORMATION OF DEPRESSION):NIL: 0%, LOW: 1-33%, , MODERATE: 34-66% AND HIGH: 67-100%
 This is a guidance Bulletin for WMO/ESCAP Panel Member countries. Visit respective National websites for Country specific Bulletins